

Our Product Range

- ⌚ **Sheet Metal Components**
- ⌚ **Nut Bolts**
- ⌚ **Scaffoldings**
- ⌚ **Hinges**
- ⌚ **Forged Components**
- ⌚ **Industrial Casting**
- ⌚ **Wrought iron components**

Sheet metal components





Slotting Channel

We are manufacturer of Sheet Metal Components. These Sheet Metal Components is used for different industrial sector like automobile, machinery manufacturer, railway sector, safety products, confectionery industries etc.



Sheet Metal Parts

We are offering Industrial Sheet Metal Components. Our range of Industrial Sheet Metal Components is manufactured using the finest quality raw material that ensures high productivity and efficient working. We offer customization of our range as per the client's specifications to cater their needs at our best.



Cotter Pin

We are engaged in manufacturing, supplying and exporting a quality assured range of Industrial Machined Components. The components are manufactured as per the set industry standards and norms using high-grade raw material, which is sourced from the authentic vendors of the market. Clients can also avail these components in customized forms as per their requirements.

Features :

- ⌚ Accurate dimensions
- ⌚ Superior finish
- ⌚ Durability



Sliding Channel

We are engaged in manufacturing, supplying and exporting a quality assured range of SLIDING CHANNEL. The components are manufactured as per the set industry standards and norms using high-grade raw material, which is sourced from the authentic vendors of the market. Clients can also avail these components in customized forms as per their requirements.

Features :

- 🕒 Accurate dimensions
- 🕒 Superior finish
- 🕒 Durability



Sheet Metal Components for Electrical Items

We offer a wide range of sheet metal components and automotive sheet metal components for home appliances, electrical goods components and others. These are available in various sizes & dimensions can also be customized as per the specifications.



Sheet Metal Assemblies

We offer a wide range of sheet metal components and automotive sheet metal components for home appliances, electrical goods components and others. These are available in various sizes & dimensions can also be customized as per the specifications.



Precision Sheet Metal Parts

We offer a wide range of sheet metal components and automotive sheet metal components for home appliances, electrical goods components and others. These are available in various sizes & dimensions can also be customized as per the specifications.

Nut Bolts







We are amongst the renowned manufacturers and exporters of a quality-assured range of Industrial Nuts. These products are made up of high quality material in strict adherence with the industry standards and norms. The entire range of products is extensively tested before delivery in order to offer a defect-free range of products to the customers. These products are made to undergo through crack detection tests in order to attain customers' trust and reliability factor.



Industrial Metal Nuts

We are counted among the leading industries engaged in manufacturing and offering a qualitative range of Industrial Metal Nuts. Manufactured in tandem with international quality standards, these nuts are demanded widely in various engineering and automobile industries and are made available to the customers at leading prices in the market. Furthermore, we are capable of customizing these products in accordance with the specified details of the clients, in order to serve them in the most efficient manner.

Highlights of these products are as follows:

- ⌚ Resistance against corrosion and abrasion
- ⌚ Dimensional stability
- ⌚ Durability

Specifications :

- ⌚ Types available : Serrated, Non-Serrated
- ⌚ Standard : JIS
- ⌚ Size : M3-M10
- ⌚ Materials : Various Materials including iron (carbon steel), Stainless steel and brass
- ⌚ Plating : Iron



Special Nuts

We have emerged as one of the specialized manufacturers, suppliers, distributors and exporters of a quality-approved range of Special Nuts. The offered range of these products is available in various dimensions and specifications so as to meet the divergent demands of the customers. Our quality controllers ensure to offer these products after conducting through quality examinations as per the prescribed guidelines and norms of the industry.

Some Features at a glance:

- ⌚ Accurate dimensions
- ⌚ Durability
- ⌚ High tensile strength
- ⌚ Resistance against corrosion
- ⌚ Precisely designed

Specifications:

- ⌚ Size : M2-M18
- ⌚ Surface Treatment : Zinc Plated or according to customer requirement
- ⌚ Material : Steel



Heavy Hex Nuts

Backed by the rich experience and a competent team of professionals, we are able to offer Heavy Hex Nuts. The offered range of heavy hex nuts is made utilizing high grade raw material and innovative techniques in strict compliance with the international quality norms and standards.

Some Features at a glance :

- ⌚ Corrosion resistant
- ⌚ Easy to install
- ⌚ Precisely engineered
- ⌚ Smooth finish
- ⌚ High tensile strength

Specifications:

- ⌚ Size : 1/2" - 2 1/2"
- ⌚ Material : C1035, C1045, 40Cr, 42CrMo
- ⌚ Surface : Hot Dip Galvanized/HDG



Lock Nuts

Owing to the immense experience and a competent team of experts, we are able to offer Lock Nuts. The offered range of lock nuts is made utilizing high grade raw material and highly advanced technology in strict compliance with the international quality standards.

Some Features at a glance :

- ⌚ Easy installation
- ⌚ Precise dimensions
- ⌚ Durable finish standard
- ⌚ High tensile strength

Specifications :

- ⌚ Standard : DIN, ISO, JIS, AISI
- ⌚ Size : M3-M56
- ⌚ Material : Steel



Spring Nuts

We have emerged as one of the renowned manufacturers, suppliers, distributors and exporters of a wide array of Spring Nuts. These products are offered in various specifications and details as per the customers' demands. We ensure to manufacture these products by utilizing the premium quality range of material and advanced technology.

Some other details at a glance :

- 🕒 Precise designing
- 🕒 Sturdy construction
- 🕒 Resistance against corrosion
- 🕒 High strength
- 🕒 High tensile strength

Specifications :

- 🕒 Products Name : Spring nut
- 🕒 Size : M6-M18 Spring Nut
- 🕒 Material : Carbon steel, Stainless steel spring nut
- 🕒 Finish : Zinc,chrome, Nickel spring nut
- 🕒 Quality : High-quality raw material, Strict inspection



Coupling Nuts

We are a noted manufacturers, suppliers, distributors and exporters of a qualitative array of Coupling Nuts. These products are sturdily constructed with perfection in a well-equipped infrastructure unit. The entire range of these products is manufactured in strict compliance with the set standards and norms of the industry.

Some Features at a glance :

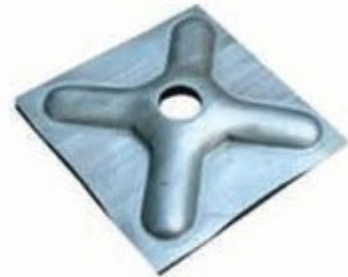
- 🕒 Sturdiness

- ⌚ Durability
- ⌚ Corrosion-resistance
- ⌚ Abrasion-resistance

Specifications :

- ⌚ Size : 1/4" to 2"
- ⌚ Material : Carbon steel, stainless steel 304 and 316(A2,A4)
- ⌚ Surface : Plain, Zinc plated, Yellow zinc plated, Black zinc plated, Nickel plated, Hot dip galvanization
- ⌚ Diameter : M6 to M52

Scaffolding Couplers













Creating a niche of Scaffolding Couplers such as Right Angle Coupler Forged, Swivel Coupler Forged, Put Log Coupler, Board Retaining Coupler, Girder Coupler Forged, Sleeve Coupler and many more items at its best, with utmost quality.



Prop Sleeve

Product Details

- ⌚ Prop Sleeve 60.3mm X 210mm
- ⌚ Length X 2.8mm thickness with casting prop nut with L type handle



Tie Rod

Product Details

- ⌚ Tie Rod : 16 mm Acme thread
- ⌚ Length : 6m
- ⌚ Weight : 8kg 400Gram



Waler Plate

Product Details

- ⌚ Waler plate / Flower plate
- ⌚ Size : 120mm x 120mm
- ⌚ Thickness : 4mm, 5mm ,6mm, 8mm



Tie Rod Connector

Product Details

- ⌚ Tie Rod hex Connector
- ⌚ Length : 50 mm



Casting Top Cup

Product Details

- 🕒 Casting top Cup
- 🕒 3 Lugs, 4 lugs
- 🕒 Weight : 400 Gm , 420 Gm , 440 Gm



Bottom Cup

Product Details

- 🕒 Size : 4mm x 29 mm
- 🕒 Weight : 190 gm
- 🕒 Size : 5mm x 29 mm
- 🕒 Weight : 215 gm



Ledger Blade (Forged)

Product Details

- ⌚ Weight : 190 Gm, 200 Gm, 210 Gm, 220 Gm, 240 Gm



Steel Band

Product Details

- ⌚ Support Every 1.5m Max
- ⌚ BS 2482 VG



Wing Nut Plate

Product Details

- ⌚ Combination Plate
- ⌚ Forged Wing nut riveted With plate
- ⌚ Size : 100 mm x 120 mm x 10 mm

Hinges



We are a prominent name, which is engaged in delivering an unmatched range of Male Female Hinges. The offered range of hinges is manufactured utilizing high grade raw material and innovative techniques in strict compliance with the international quality norms. Along with this, the offered range of hinges is widely appreciated among the clients for its high tensile strength, easy installation, precise dimensions and durable finish standards. These products are easy to fix and are dimensionally accurate. Products incorporated in this range are mentioned below.



Iron Male Female Hinges

Keeping in sync with time, we are able to offer Iron Male Female Hinges to our respectable clients. The offered range of male female hinges are made utilizing high grade raw material and innovative techniques in strict compliance with the international quality norms and standards. Moreover, the offered range of male female hinges is suitably checked on varied parameters to ensure that defect-free products are delivered at customers' premises.

Features :

- ⌚ Dimensional stability
- ⌚ Weather resistant
- ⌚ Optimum performance
- ⌚ Precise dimensions
- ⌚ Natural oil finish

Specifications :

- ⌚ Row : Single row
- ⌚ Pitch : 2.5mm
- ⌚ Temperature Range : -25 deg C ~+85 deg C



Designer Male Female Hinges

Owing to the immense experience and a competent team of experts, we are able to offer Designer Male Female Hinges to respectable clients. These decorative hinges offered by us are made utilizing high grade raw material,

which is sourced from trustworthy vendors of the market. In addition to this, the offered range of decorative hinges is strictly checked on different parameters to ensure its adherence with the international quality norms and standards.

Features :

- ⌚ Perfect Finish
- ⌚ Unique Designs
- ⌚ Corrosion Resistant
- ⌚ Precise Dimensions
- ⌚ Durable

Dimensions :

- ⌚ Height (female) = 16mm
- ⌚ Height (male) = 24mm
- ⌚ Length = 82mm
- ⌚ Pin diameter = 6m

Material :

- ⌚ Chrome Plated Hinge Body Brass
- ⌚ Pin Stainless Steel



Decorative Male Female Hinges

We are manufacturing Decorative Hinges as per requirements of our clients. Our products are made by high grade materials such as steel and bronze hence are very strongly built. These products are available in latest designs with very attractive metallic colors. Moreover, these products are also offered with us in bulk as per the requirements placed by our clients. These hinges are manufactured in compliance with the norms laid by the industry and so for the reason highly applauded across the region.

Specifications :

- ⌚ Thickness : 0.8 mm
- ⌚ Length : 51 mm
- ⌚ Width : 14 mm
- ⌚ Material : Iron



Male Female Hinge Fittings

We are engaged in manufacturing best quality of Male Female Hinge Fittings. These decorative hinges offered by us are made utilizing high grade raw material, which is sourced from trustworthy vendors of the market. These hinges find great application in various industries. These Male Female Hinge Fittings due to there quality and finishing are most demanded by our esteemed customers.

Specifications :

- ⌚ Material : Hinge Body Brass
- ⌚ Dimension : Height (female) = 16 mm
- ⌚ Height (male) = 24 mm
- ⌚ Length = 82 mm
- ⌚ Pin diameter = 6 mm



Copper Male Female Hinges

We are one of the leading manufacturer and exporter of Copper Male Female Hinges. These hinges can be in self finish or polished surface. The sizes of these hinges are from 10mm to 25mm. These male female hinge fittings are used for the installation in different industrial appliances as well as for doors and windows to provide a smooth, frictionless and easy installation.

Specifications :

- ⌚ Material : Hinge Body Brass
- ⌚ Dimension : Height (female) = 16 mm

- ⌚ Height (male) = 24 mm
- ⌚ Length = 82 mm
- ⌚ Pin diameter = 6 mm



Decorative Bar Hinges

Keeping in sync with the ever-changing demands of the customers, we have been able to bring forth a broad array of Decorative Bar Hinges. Precisely engineered using high grade components and modern machinery, the range of decorative hinges is thoroughly tested on varied parameters to assure flawlessness & zero-defect. Available in varied sizes, grades and specifications.

The range is acknowledged for the following attributes :

- ⌚ Perfect finish
- ⌚ High tensile strength
- ⌚ Rust & corrosion resistance
- ⌚ Simple working & easy handling

Specifications :

- ⌚ Size : 3.3"*3.5"
- ⌚ Length : 89 mm
- ⌚ Width Open : 89 mm
- ⌚ Thickness : 2.5 mm



Metal Bar Hinges

In order to cater to the diverse requirements of honorable clients, we are able to offer Metal Bar Hinges. The offered range of bar hinges is made utilizing high grade raw material and highly advanced technology in strict compliance with the international quality standards. Along with this, the offered range of bar hinges is ideally utilized in side & top hung open-able (casement) windows so as to ensure support & also enabling the movement of window panes.

Features :

- ⌚ High tensile strength
- ⌚ Easy installation
- ⌚ Precise dimensions
- ⌚ Durable finish standard

Attributes :

- ⌚ Model Number : NNI-002
- ⌚ Brand Name : GNNI
- ⌚ Available Range : Self finish Galvanized 10 mm to 46 mm diameters Any length

Additional Information :

- ⌚ Payment Terms : L/C D/P T/T
- ⌚ Minimum Order Quantity : Any quantity
- ⌚ Packaging Details : Packed in Small Cartons of 20, 30, 40, 50 Pieces Will Be 50 such small cartons in a pallet
Wooden box packing also available on request of the clients
- ⌚ Delivery Time : Within 25 Days

Industrial Casting



Offered by us is a wide and exclusive range of Industrial Casting to our clients at nominal prices in the market. Precisely designed under the able guidance and expertise of our professionals, these products are made available to the clients in varied sizes, dimensions and other specifications and can even be customized in accordance with their specific requirements. We make sure to examine the quality of the entire range before delivering these products to the clients end, in order to ensure their compliance with international quality standards. Products included in this range are Spring Pivot Casting, Pressure Die Casting, Die Casting & Sand Casting.



Pressure Die Casting

Our wide range of products includes Pressure Die Casting which has very good demand in the market for its utility. The optimum quality materials are used in the manufacturing of these pressure die castings which ensures their long lastingness and flawless performance. We have set a new standard of quality in the zinc pressure die casting process. This have been achieved through our own understanding, knowledge and perfection in this specific process.

Specifications :

- ⌚ Materials : Casting Zamak 3 and 5
- ⌚ Process : Die-casting
- ⌚ Machining : CNC
- ⌚ Finishes : Plating, painting, powder coating and sand blast
- ⌚ OEM : Zinc die-casting project are welcome



Sand Casting

We are one of the leading Sand Casting manufacturers and exporter. Sand Casting is an eminent way of making heavy duty parts mainly of Aluminum. This casting is manufactured using high grade raw material and latest technology by our skilled professionals. Our offered casting can be availed in various specifications as per information provided by our renowned clients' within promised time-frame.

Specifications :

- ⌚ Molding Process : Resin sand/Green Sand
- ⌚ Material : EN-GJS-400-15/EN-GJS-500-7/EN-GJS-600-3/EN-GJS-700-2
- ⌚ Molding : Hand molding/Molding machine Z145/146/148/Molding line
- ⌚ Possible Heat Treatment : Annealing
- ⌚ Industry involved : Municipal Construction / Fluid / Automotive
- ⌚ Part unit weight range : 0. 5kg-2000kgs
- ⌚ Max/Min wall thickness requirements : 4mm-250mm



Die Casting

We are among one of the leading manufacturer and supplier of Die Casting. Die casting is an efficient, economical process offering a broader range of shapes and components than any other manufacturing technique. Parts have long service life and may be designed to complement the visual appeal of the surrounding part. These parts are well-known for their easy maintenance and application specific design.

Specifications :

- ⌚ Service : OEM / ODM are welcomed
- ⌚ Material : Aluminum,zinc,steel,iron,etc
- ⌚ Weight : Not standard
- ⌚ Production : As per the request
- ⌚ Test : Test equipments and workers
- ⌚ Applied software for drawings : CAD, UG,PRO/E, CAM/CAE, etc.
- ⌚ Product use : Auto-parts, pneumatic parts, motor-parts, bicycle parts, machinery parts etc.



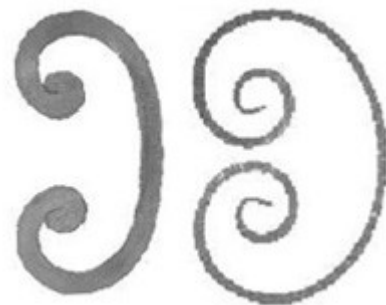
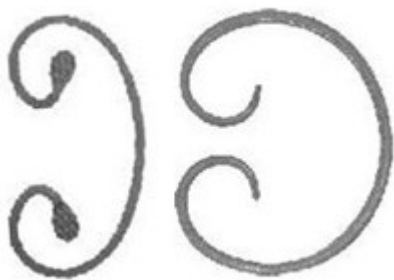
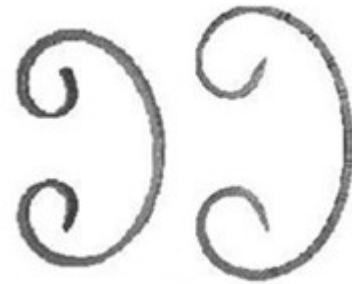
Spring Pivot Casting

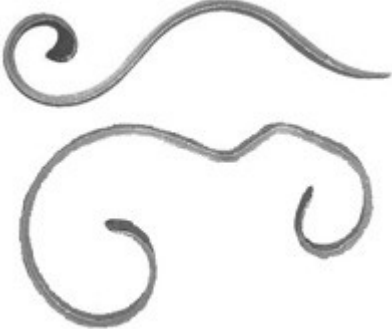
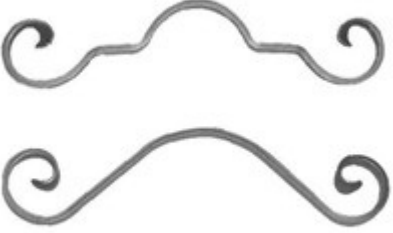
We are one of the leading manufacturer and exporter of Spring Pivot Casting to our esteemed clients. These products are manufactured using superior grade raw material and technically advanced machines. These products are manufactured in adherence with the global quality standards. An expert team of professionals work towards providing the best quality springs Casting to our customers Precision manufactured with rigid quality control.

Specifications :

- ⌚ Techniques : Die casting
- ⌚ Precision : 0.05mm
- ⌚ Machine : Hot-chamber die casting machine
- ⌚ Product Weight : 0.01kg to 10kgs

Wrought Iron Components





Wrought Iron Components

Our wrought iron component range enables metalworkers, blacksmiths, fabricators or anyone involved in the supply of gates, railings or decorative ironwork, to create high quality wrought iron products at low cost. These products are equally at home in domestic and commercial environments - both inside and out - and have been used in large public buildings such as airports, hotels and exhibition halls.

We also have the largest range of wrought iron railheads, bars, finials, spearpoints, bushes, collars, scrolls, spheres, etc. to complement any design.

Baskets





Drop Forged Balls



Flower Panels





①

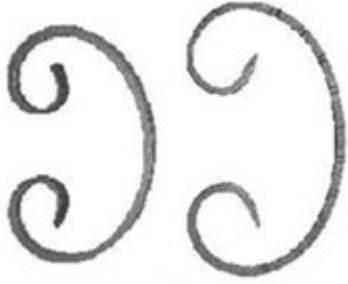


②

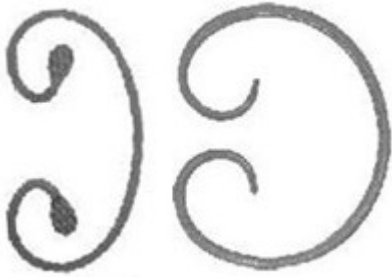


③

C-Scrolls



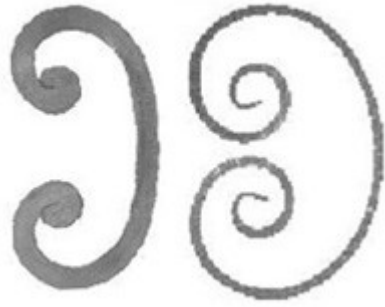
①



②



③



①



②

S-Scrolls



③



①



②



③

Various Scrolls



①



②